

EHHB

High Hardness Four Flute Ball End Mills

FEATURES

Highly efficient cutting with four flutes.

Variable flute geometry enables vibration suppression.

Wide chip pocket improves chip removal for stable cutting.

ATH Coating provides long tool life even in hardened steels.



EHHB

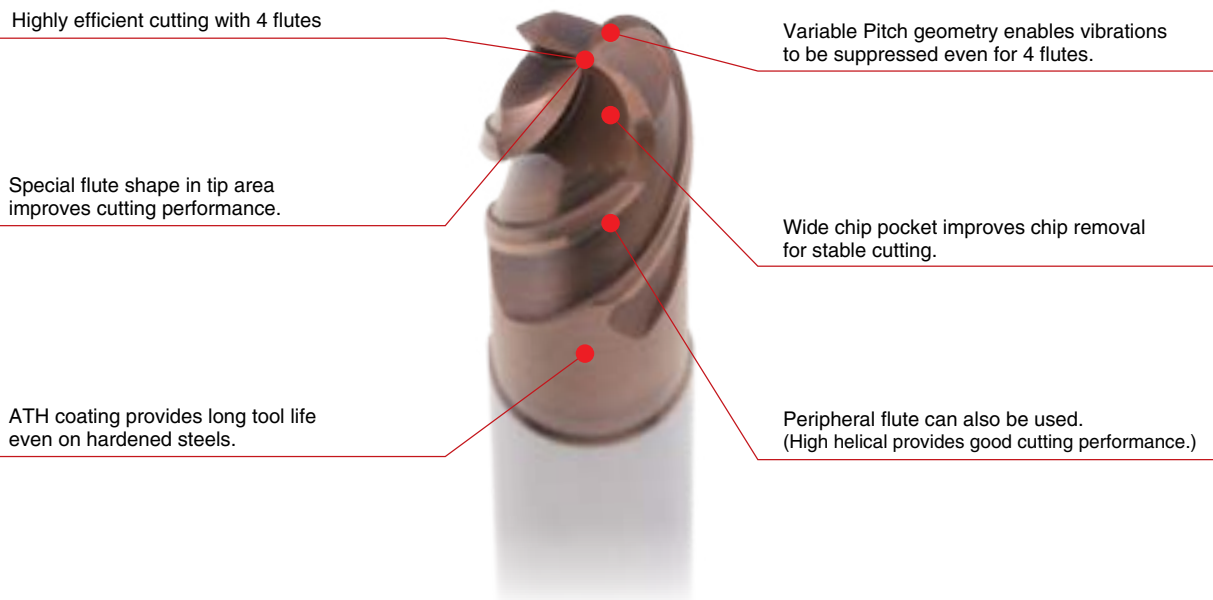


INTRODUCTION

EHHB High Hard Four Flute Ball End Mills are designed for the high-efficiency direct milling of hardened steels up to 72HRC. The variable pitch geometry suppresses vibration during machining, resulting in better surface finishes and longer tool life. The wide chip pocket provides superior chip evacuation, further improving stable cutting.

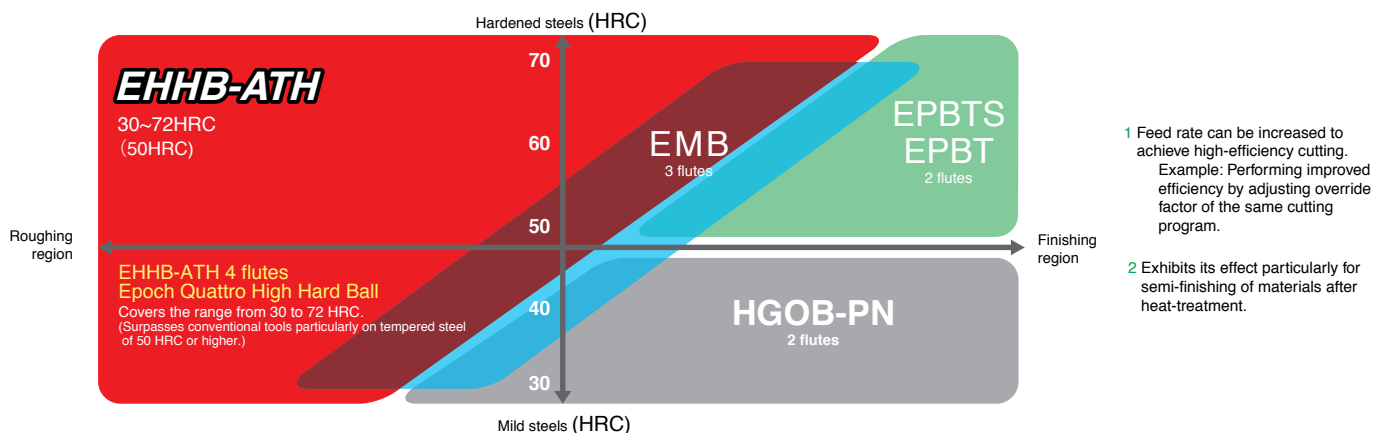
FEATURES

1. Features of Epoch High Hard Ball End Mill



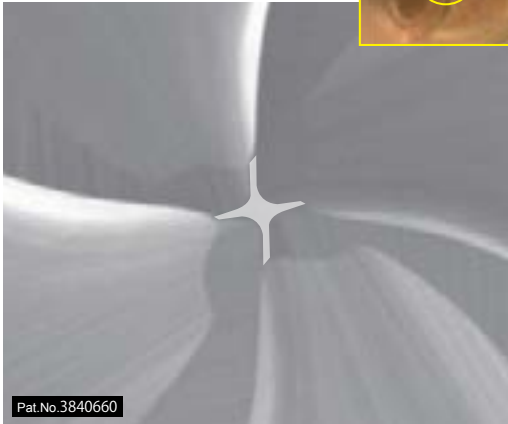
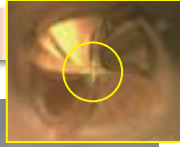
Achieves high-efficiency direct milling of hardened steels!

2. Performance and Positioning



3. Special Tip Shape

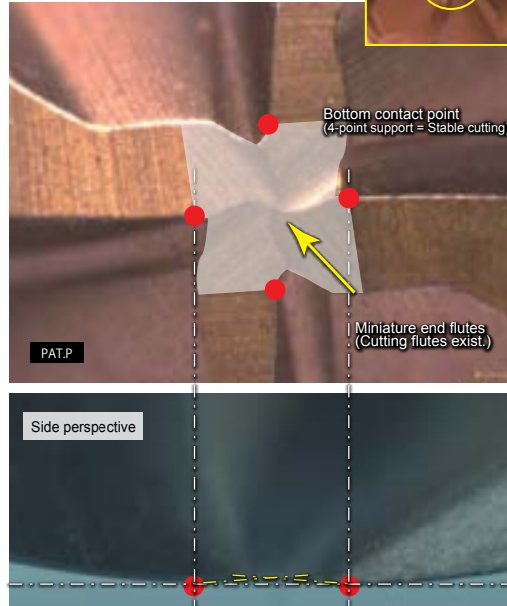
$\phi 1 \sim \phi 3$



Features and effects

By creating a special flank face with a tiny relief angle at the very tip section, R accuracy is improved even with 4 flutes. This realizes stable cutting due to improved tip rigidity.

$\phi 4 \sim \phi 12$

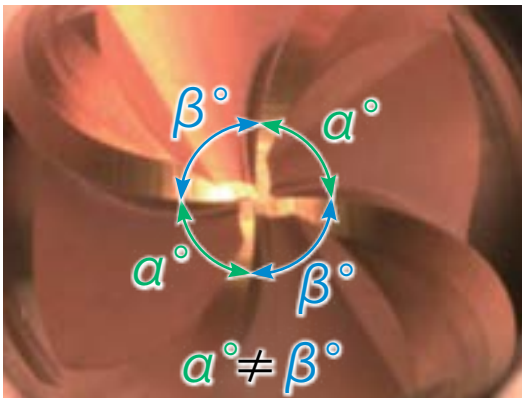


Features and effects

Features: Zero cutting point at the center is isolated from the cutting point.

Effects: Chipping due to jamming of cutting chips at center area is suppressed.

4. Suppressed Vibration With Variable Pitch Geometry



EHHB-ATH

4 flutes
Variable Pitch

Work material: YXR3(58HRC)

Tool: $\phi 8(R4) \times 4$ flutes

$n = 4,000 \text{ min}^{-1}$ ($vc = 100 \text{ m/min}$)

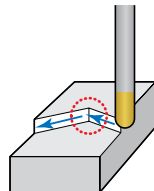
$vf = 1,920 \text{ mm/min}$ ($fz = 0.12 \text{ mm/t}$)

$ap = 0.3 \text{ mm}$ $ae = 0.1 \text{ mm}$

Dry Air-blow

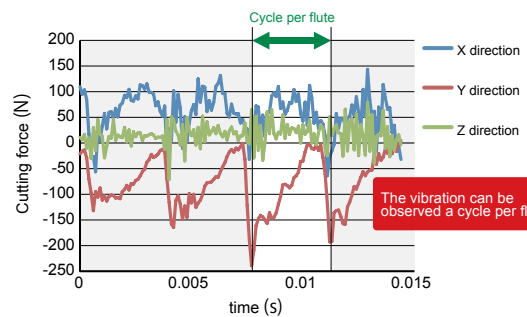
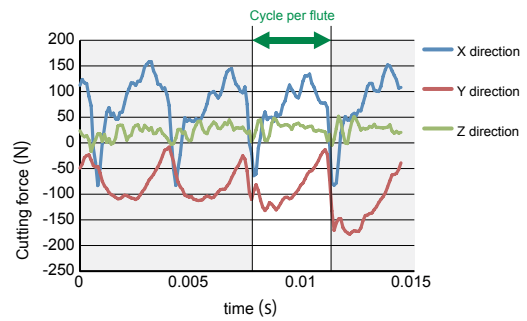
Machine: HSK-A6

Overhang: 332mm

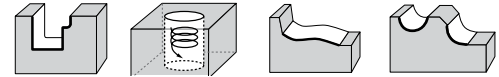
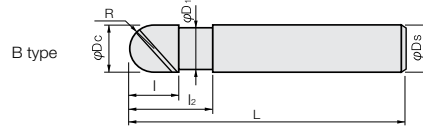
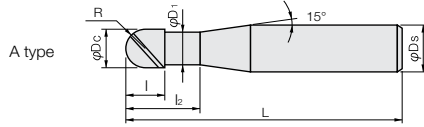


Conventional

4 flutes
Equal pitch



EHHB



Helix Angle: 40° Ds: h5

Part No.	Stock	Size (mm)							Type
		R	D _c	I	I ₂	D ₁	L	D _s	
EHHB4010-S4-ATH	☐	0.50	1.0	1.5	3.0	0.95	50	4	A
EHHB4010-S6-ATH	●							6	A
EHHB4015-S4-ATH	☐	0.75	1.5	2.5	4.5	1.43	50	4	A
EHHB4015-S6-ATH	●							6	A
EHHB4020-S4-ATH	☐	1.00	2.0	3.0	6.0	1.90	50	4	A
EHHB4020-S6-ATH	●							6	A
EHHB4025-S4-ATH	☐	1.25	2.5	4.0	7.5	2.38	50	4	A
EHHB4025-S6-ATH	☐							6	A
EHHB4030-S4-ATH	☐	1.50	3.0	4.5	9.0	2.90	70	4	A
EHHB4030-S6-ATH	●							6	A
EHHB4040-S4-ATH	☐	2.00	4.0	6.0	12.0	3.90	70	4	B
EHHB4040-S6-ATH	●							6	A
EHHB4050-ATH	●	2.50	5.0	7.5	15.0	4.70	80	6	A
EHHB4060-ATH	●	3.00	6.0	9.0	18.0	5.70	90	6	B
EHHB4080-ATH	●	4.00	8.0	12.0	24.0	7.60	100	8	B
EHHB4100-ATH	●	5.00	10.0	15.0	30.0	9.50	100	10	B
EHHB4120-ATH	●	6.00	12.0	18.0	36.0	11.50	110	12	B

R	Tolerance on R	Tolerance on Dia.
R0.5-1.5	±0.005	0~-0.010
R2-3	±0.007	0~-0.014
R4-6	±0.010	0~-0.020

☐ = Stocked items in Japan

EHHB

Table of standard cutting conditions (Roughing)



R	D _c	Hardened Steels (55~62HRC)				Hardened Steels (62~66HRC)				Hardened Steels (66~72HRC)			
		v _c = 110m/min				v _c = 90m/min				v _c = 70m/min			
		n min ⁻¹	Vf (mm/min)	a _p (mm)	a _e (mm)	n min ⁻¹	Vf (mm/min)	a _p (mm)	a _e (mm)	n min ⁻¹	Vf (mm/min)	a _p (mm)	a _e (mm)
0.50	1.0	35,000	1,930	0.08	0.23	28,700	1,340	0.06	0.18	22,300	860	0.05	0.14
0.75	1.5	23,400	1,760	0.11	0.34	19,100	1,220	0.09	0.27	14,900	780	0.07	0.20
1.00	2.0	17,500	1,750	0.15	0.45	14,300	1,220	0.12	0.36	11,100	780	0.09	0.27
1.25	2.5	14,000	1,650	0.19	0.56	11,500	1,150	0.15	0.45	8,900	730	0.11	0.34
1.50	3.0	11,700	1,650	0.23	0.68	9,600	1,150	0.18	0.54	7,400	730	0.14	0.41
2.00	4.0	8,800	1,670	0.30	0.90	7,200	1,160	0.24	0.72	5,600	740	0.18	0.54
2.50	5.0	7,000	1,700	0.38	1.13	5,700	1,170	0.30	0.90	4,500	760	0.23	0.68
3.00	6.0	5,800	1,690	0.45	1.35	4,800	1,190	0.36	1.08	3,700	750	0.27	0.81
4.00	8.0	4,400	1,760	0.60	1.80	3,600	1,220	0.48	1.44	2,800	780	0.36	1.08
5.00	10.0	3,500	1,750	0.75	2.25	2,900	1,230	0.60	1.80	2,200	770	0.45	1.35
6.00	12.0	2,900	1,650	0.90	2.70	2,400	1,160	0.72	2.16	1,900	760	0.54	1.62

- Note**
1. Use the appropriate coolant for the work material and machining shape.
 2. Use as highly rigid and accurate machine as possible.
 3. These conditions are for general guidance; in actual machining conditions adjust the parameters according to your actual machine and work-piece conditions.
 4. If the rpm available is lower than that recommended please reduce the feed rate to the same ratio.

R	D _C	Hardened Steels (55~62HRC)				Hardened Steels (62~66HRC)				Hardened Steels (66~72HRC)			
		v _c =160m/min				v _c =140m/min				v _c =120m/min			
		n min ⁻¹	Vf (mm/min)	a _p (mm)	a _e (mm)	n min ⁻¹	Vf (mm/min)	a _p (mm)	a _e (mm)	n min ⁻¹	Vf (mm/min)	a _p (mm)	a _e (mm)
0.50	1.0	51,000	1,840	0.02~0.05	0.02	44,600	1,300	0.02~0.05	0.02	38,200	950	0.02~0.05	0.02
0.75	1.5	34,000	1,840	0.02~0.07	0.03	29,700	1,300	0.02~0.07	0.03	25,500	950	0.02~0.07	0.03
1.00	2.0	25,500	1,840	0.02~0.10	0.04	22,300	1,300	0.02~0.10	0.04	19,100	950	0.02~0.10	0.04
1.25	2.5	20,400	1,920	0.05~0.12	0.05	17,800	1,360	0.05~0.12	0.05	15,300	990	0.05~0.12	0.05
1.50	3.0	17,000	1,920	0.05~0.15	0.06	14,900	1,370	0.05~0.15	0.06	12,700	980	0.05~0.15	0.06
2.00	4.0	12,700	1,930	0.05~0.20	0.08	11,100	1,370	0.05~0.20	0.08	9,600	1000	0.05~0.20	0.08
2.50	5.0	10,200	1,980	0.05~0.25	0.10	8,900	1,400	0.05~0.25	0.10	7,600	1010	0.05~0.25	0.10
3.00	6.0	8,500	1,980	0.05~0.30	0.12	7,400	1,400	0.05~0.30	0.12	6,400	1020	0.05~0.30	0.12
4.00	8.0	6,400	2,050	0.05~0.40	0.16	5,600	1,460	0.05~0.40	0.16	4,800	1060	0.05~0.40	0.16
5.00	10.0	5,100	2,040	0.05~0.50	0.20	4,500	1,460	0.05~0.50	0.20	3,800	1050	0.05~0.50	0.20
6.00	12.0	4,200	1,920	0.05~0.60	0.24	3,700	1,370	0.05~0.60	0.24	3,200	1000	0.05~0.60	0.24

- Note**
1. Use the appropriate coolant for the work material and machining shape.
 2. Use as highly rigid and accurate machine as possible.
 3. These conditions are for general guidance; in actual machining conditions vadjust the parameters according to your actual machine and work-piece conditions.
 4. If the rpm available is lower than that recommended please reduce the feed rate to the same ratio.

R	D _c	Hardened Steels (55~62HRC)				Hardened Steels (62~66HRC)				Hardened Steels (66~72HRC)			
		v _c =150m/min				v _c =125m/min				v _c =100m/min			
		n min ⁻¹	Vf (mm/min)	a _p (mm)	a _e (mm)	n min ⁻¹	Vf (mm/min)	a _p (mm)	a _e (mm)	n min ⁻¹	Vf (mm/min)	a _p (mm)	a _e (mm)
0.50	1.0	47,800	2,630	1.0	0.02	39,800	1,750	1.0	0.02	31,800	1050	1.0	0.01
0.75	1.5	31,800	2,390	1.5	0.03	26,500	1,590	1.5	0.02	21,200	950	1.5	0.02
1.00	2.0	23,900	2,390	2.0	0.04	19,900	1,590	2.0	0.03	15,900	950	2.0	0.02
1.25	2.5	19,100	2,240	2.5	0.05	15,900	1,490	2.5	0.04	12,700	900	2.5	0.03
1.50	3.0	15,900	2,240	3.0	0.06	13,300	1,500	3.0	0.05	10,600	900	3.0	0.03
2.00	4.0	11,900	2,260	4.0	0.08	10,000	1,520	4.0	0.06	8,000	910	4.0	0.04
2.50	5.0	9,600	2,330	5.0	0.10	8,000	1,550	5.0	0.08	6,400	930	5.0	0.05
3.00	6.0	8,000	2,330	6.0	0.12	6,600	1,540	6.0	0.09	5,300	930	6.0	0.06
4.00	8.0	6,000	2,400	8.0	0.16	5,000	1,600	8.0	0.12	4,000	960	8.0	0.08
5.00	10.0	4,800	2,400	10.0	0.20	4,000	1,600	10.0	0.15	3,200	960	10.0	0.10
6.00	12.0	4,000	2,280	12.0	0.24	3,300	1,500	12.0	0.18	2,700	920	12.0	0.12

- Note**
1. Use the appropriate coolant for the work material and machining shape.
 2. Use as highly rigid and accurate machine as possible.
 3. These conditions are for general guidance; in actual machining conditions adjust the parameters according to your actual machine and work-piece conditions.
 4. If the rpm available is lower than that recommended please reduce the feed rate to the same ratio.