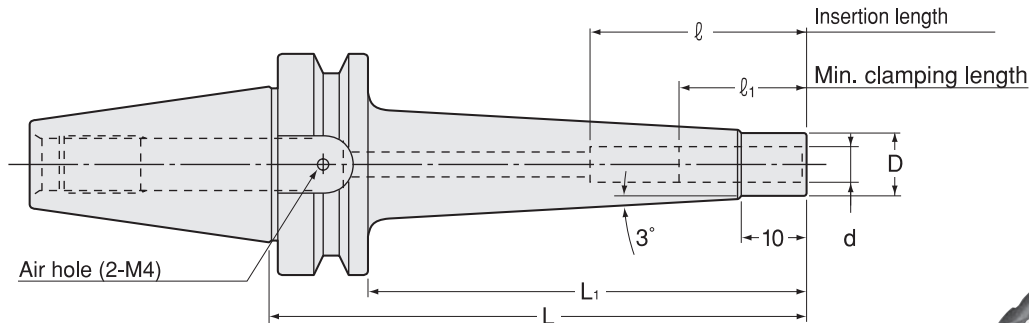


Shrink Fit (Slim Type)

- Shrinkage method clamps a cutting tool firmly by heating and cooling the chuck. High precision and strong Clamping force. (Slim Type)



Inch Sizes

Unit : Inch

Code	Model	d	L	L1	D	I	I1
3060 33108105	BT30 -SRS0250A -105	0.250	4.134	3.268	0.374	1.024	1.417
3060 33108135	-135	0.250	5.315	4.449	0.374	1.024	1.417
3060 33110105	BT30 -SRS0312A -105	0.312	4.134	3.268	0.433	1.024	1.969
3060 33110135	-135	0.312	5.315	4.449	0.433	1.024	1.969
3060 33112105	BT30 -SRS0375A -105	0.375	4.134	3.268	0.512	1.260	1.969
3060 33112135	-135	0.375	5.315	4.449	0.512	1.260	1.969
3060 33116105	BT30 -SRS0500A -105	0.500	4.134	3.268	0.591	1.457	2.756
3060 33116135	-135	0.500	5.315	4.449	0.591	1.457	2.756
3060 33120105	BT30 -SRS0625A -105	0.625	4.134	3.268	0.787	1.575	3.150
3060 33120135	-135	0.625	5.315	4.449	0.787	1.575	3.150
3060 33308105	BT40 -SRS0250A -105	0.250	4.134	3.071	0.374	1.024	1.417
3060 33308135	-135	0.250	5.315	4.252	0.374	1.024	1.417
3060 33310105	BT40 -SRS0312A -105	0.312	4.134	3.071	0.433	1.024	1.969
3060 33310135	-135	0.312	5.315	4.252	0.433	1.024	1.969
3060 33312105	BT40 -SRS0375A -105	0.375	4.134	3.071	0.512	1.260	1.969
3060 33312135	-135	0.375	5.315	4.252	0.512	1.260	1.969
3060 33312165	-165	0.375	6.496	5.433	0.512	1.260	1.969
3060 33316105	BT40 -SRS0500A -105	0.500	4.134	3.071	0.591	1.457	2.756
3060 33316135	-135	0.500	5.315	4.252	0.591	1.457	2.756
3060 33316165	-165	0.500	6.496	5.433	0.591	1.457	2.756
3060 33320105	BT40 -SRS0625A -105	0.625	4.134	3.071	0.787	1.575	3.150
3060 33320135	-135	0.625	5.315	4.252	0.787	1.575	3.150
3060 33320165	-165	0.625	6.496	5.433	0.787	1.575	3.150
3060 33324105	BT40 -SRS0750A -105	0.750	4.134	3.071	1.024	1.654	3.937
3060 33324135	-135	0.750	5.315	4.252	1.024	1.654	3.937
3060 33324165	-165	0.750	6.496	5.433	1.024	1.654	3.937
3060 33508105	BT50 -SRS0250A -105	0.250	4.134	2.638	0.374	1.024	1.417
3060 33508135	-135	0.250	5.315	3.819	0.374	1.024	1.417
3060 33510105	BT50 -SRS0312A -105	0.312	4.134	2.638	0.433	1.024	1.969
3060 33510135	-135	0.312	5.315	3.819	0.433	1.024	1.969
3060 33512105	BT50 -SRS0375A -105	0.375	4.134	2.638	0.512	1.260	1.969
3060 33512135	-135	0.375	5.315	3.819	0.512	1.260	1.969
3060 33512165	-165	0.375	6.496	5.000	0.512	1.260	1.969
3060 33512195	-195	0.375	7.677	6.181	0.512	1.260	1.969
3060 33516105	BT50 -SRS0500A -105	0.500	4.134	2.638	0.591	1.457	2.756
3060 33516135	-135	0.500	5.315	3.819	0.591	1.457	2.756
3060 33516165	-165	0.500	6.496	5.000	0.591	1.457	2.756
3060 33516195	-195	0.500	7.677	6.181	0.591	1.457	2.756
3060 33520105	BT50 -SRS0625A -105	0.625	4.134	2.638	0.787	1.575	3.150
3060 33520135	-135	0.625	5.315	3.819	0.787	1.575	3.150
3060 33520165	-165	0.625	6.496	5.000	0.787	1.575	3.150
3060 33520195	-195	0.625	7.677	6.181	0.787	1.575	3.150
3060 33524105	BT50 -SRS0750A -105	0.750	4.134	2.638	1.024	1.654	3.937
3060 33524135	-135	0.750	5.315	3.819	1.024	1.654	3.937
3060 33524165	-165	0.750	6.496	5.000	1.024	1.654	3.937
3060 33524195	-195	0.750	7.677	6.181	1.024	1.654	3.937

Metric Sizes

Unit : Metric

Code	Model	d	L	L1	D	ℓ1	ℓ	kg
3060 31206105	BT30 -SRS6A -105	6	105	83	9	26	26 ~ 36	0.6
3060 31206135	-135	6	135	113	9	26	26 ~ 36	0.6
3060 31208105	BT30 -SRS8A -105	8	105	83	11	26	26 ~ 50	0.7
3060 31208135	-135	8	135	113	11	26	26 ~ 50	0.7
3060 31110105	BT30 -SRS10A -105	10	105	83	13	32	32 ~ 50	0.7
3060 31110135	-135	10	135	113	13	32	32 ~ 50	0.7
3060 31112105	BT30 -SRS12A -105	12	105	83	15	37	37 ~ 70	0.7
3060 31112135	-135	12	135	113	15	37	37 ~ 70	0.8
3060 31116105	BT30 -SRS16A -105	16	105	83	20	40	40 ~ 80	0.8
3060 31116135	-135	16	135	113	20	40	40 ~ 80	0.8
3060 31306105	BT40 -SRS6A -105	6	105	78	9	26	26 ~ 36	1.1
3060 31306135	-135	6	135	108	9	26	26 ~ 36	1.1
3060 31306165	-165	6	165	138	9	26	26 ~ 36	
3060 31308105	BT40 -SRS8A -105	8	105	78	11	26	26 ~ 50	1.2
3060 31308135	-135	8	135	108	11	26	26 ~ 50	1.2
3060 31308165	-165	8	165	138	11	26	26 ~ 50	
3060 31310105	BT40 -SRS10A -105	10	105	78	13	32	32 ~ 50	1.3
3060 31310135	-135	10	135	108	13	32	32 ~ 50	1.4
3060 31310165	-165	10	165	138	13	32	32 ~ 50	1.5
3060 31312105	BT40 -SRS12A -105	12	105	78	15	37	37 ~ 70	1.3
3060 31312135	-135	12	135	108	15	37	37 ~ 70	1.4
3060 31312165	-165	12	165	138	15	37	37 ~ 70	1.5
3060 31316105	BT40 -SRS16A -105	16	105	78	20	40	40 ~ 80	1.5
3060 31316135	-135	16	135	108	20	40	40 ~ 80	1.6
3060 31316165	-165	16	165	138	20	40	40 ~ 80	1.7
3060 31320105	BT40 -SRS20A -105	20	105	78	26	42	42 ~ 100	1.6
3060 31320135	-135	20	135	108	26	42	42 ~ 100	1.7
3060 31320165	-165	20	165	138	26	42	42 ~ 100	1.8
3060 31506105	BT50 -SRS6A -105	6	105	67	9	26	26 ~ 36	3.5
3060 31506135	-135	6	135	97	9	26	26 ~ 36	3.5
3060 31506165	-165	6	165	127	9	26	26 ~ 36	
3060 31508105	BT50 -SRS8A -105	8	105	67	11	26	26 ~ 50	3.6
3060 31508135	-135	8	135	97	11	26	26 ~ 50	3.6
3060 31508165	-165	8	165	127	11	26	26 ~ 50	
3060 31510105	BT50 -SRS10A -105	10	105	67	13	32	32 ~ 50	3.8
3060 31510135	-135	10	135	97	13	32	32 ~ 50	3.8
3060 31510165	-165	10	165	127	13	32	32 ~ 50	4.0
3060 31510195	-195	10	195	157	13	32	32 ~ 50	4.1
3060 31512105	BT50 -SRS12A -105	12	105	67	15	37	37 ~ 70	3.8
3060 31512135	-135	12	135	97	15	37	37 ~ 70	3.9
3060 31512165	-165	12	165	127	15	37	37 ~ 70	4.0
3060 31512195	-195	12	195	157	15	37	37 ~ 70	4.1
3060 31516105	BT50 -SRS16A -105	16	105	67	20	40	40 ~ 80	3.9
3060 31516135	-135	16	135	97	20	40	40 ~ 80	3.9
3060 31516165	-165	16	165	127	20	40	40 ~ 80	4.2
3060 31516195	-195	16	195	157	20	40	40 ~ 80	4.2
3060 31520105	BT50 -SRS20A -105	20	105	67	26	42	42 ~ 100	4.0
3060 31520135	-135	20	135	97	26	42	42 ~ 100	4.0
3060 31520165	-165	20	165	127	26	42	42 ~ 100	4.3
3060 31520195	-195	20	195	157	26	42	42 ~ 100	4.5

1. Always use carbide shank tools with h6 tolerance.

2. Use 2 pcs. of M4 x 5 (S) hex. screw (included) to close air holes on the chuck when internal coolant is used.

Heating device chart

heating device	chuck	
	SRS0250A, SRS0312A SRS6A, SRS8A	SRS0375A~SRS0750A SRS10A~SRS20A
ISG3400	Yes	Yes
SRK-HA1, HB2	No	Yes

Ordering Example

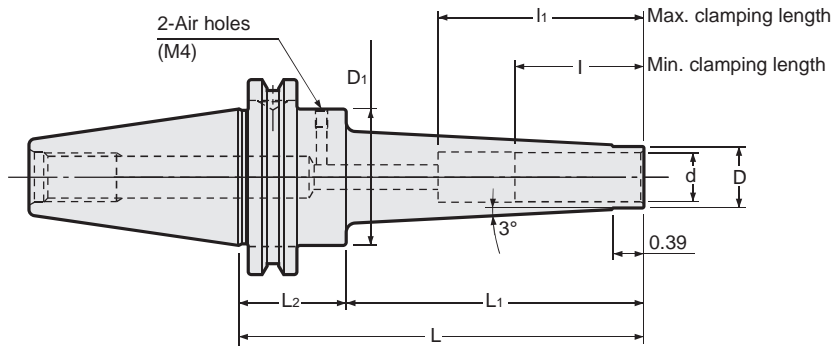
BT40 - SRS 12 A - 105
 Shank size I.D. (d) Projection length (L)



- BT
- CAT
- AHO
- HSK-A/E/F/C
- HSK-T
- UTS
- Specialized Machine
- Related Equipment
- Bush & Chamfering Drill
- Milling Chuck
- Collet Holder
- "R" Zero Holder
- Hydraulic Chuck
- Shank Fit
- Tapping Chuck
- Arbors
- Function Holder
- Turning Tool
- Retention Stud
- Tool Shank Dimensions

Shrink Fit (Slim Type)

- Shrinkage method clamps a cutting tool firmly by heating and cooling the chuck. High precision and strong chucking force. (Slim Type)



Inch Sizes

Unit : Inch

Code	Model	d	L	L1	L2	D	D1	I1	I	kg
1940 33408105	CAT40 -SRS0250A -105	0.250	4.134	2.756	1.378	0.354	1.750	1.417	1.024	1.1
1940 33408135	-135	0.250	5.315	3.937	1.378	0.354	1.750	1.417	1.024	1.1
1940 33410105	CAT40 -SRS0312A -105	0.312	4.134	2.756	1.378	0.433	1.750	1.969	1.024	1.1
1940 33410135	-135	0.312	5.315	3.937	1.378	0.433	1.750	1.969	1.024	
1940 33412105	CAT40 -SRS0375A -105	0.375	4.134	2.756	1.378	0.512	1.750	1.969	1.260	1.1
1940 33412135	-135	0.375	5.315	3.937	1.378	0.512	1.750	1.969	1.260	1.2
1940 33412165	-165	0.375	6.496	5.118	1.378	0.512	1.750	1.969	1.260	1.3
1940 33416105	CAT40 -SRS0500A -105	0.500	4.134	2.756	1.378	0.591	1.750	2.756	1.457	1.1
1940 33416135	-135	0.500	5.315	3.937	1.378	0.591	1.750	2.756	1.457	1.2
1940 33416165	-165	0.500	6.496	5.118	1.378	0.591	1.750	2.756	1.457	1.3
1940 33420105	CAT40 -SRS0625A -105	0.625	4.134	2.756	1.378	0.787	1.750	3.150	1.575	1.1
1940 33420135	-135	0.625	5.315	3.937	1.378	0.787	1.750	3.150	1.575	1.2
1940 33420165	-165	0.625	6.496	5.118	1.378	0.787	1.750	3.150	1.575	1.4
1940 33424105	CAT40 -SRS0750A -105	0.750	4.134	2.756	1.378	1.024	1.750	3.937	1.654	1.2
1940 33424135	-135	0.750	5.315	3.937	1.378	1.024	1.750	3.937	1.654	1.4
1940 33424165	-165	0.750	6.496	5.118	1.378	1.024	1.750	3.937	1.654	1.6
1940 33508105	CAT50 -SRS0250A -105	0.250	4.134	2.756	1.378	0.354	2.750	1.417	1.024	3
1940 33508135	-135	0.250	5.315	3.937	1.378	0.354	2.750	1.417	1.024	3
1940 33508165	-165	0.250	6.496	5.118	1.378	0.354	2.750	1.417	1.024	
1940 33510105	CAT50 -SRS0312A -105	0.312	4.134	2.756	1.378	0.433	2.750	1.969	1.024	
1940 33510135	-135	0.312	5.315	3.937	1.378	0.433	2.750	1.969	1.024	
1940 33510165	-165	0.312	6.496	5.118	1.378	0.433	2.750	1.969	1.024	
1940 33512105	CAT50 -SRS0375A -105	0.375	4.134	2.756	1.378	0.512	2.750	1.969	1.260	
1940 33512135	-135	0.375	5.315	3.937	1.378	0.512	2.750	1.969	1.260	
1940 33512165	-165	0.375	6.496	5.118	1.378	0.512	2.750	1.969	1.260	3.2
1940 33512195	-195	0.375	7.677	6.299	1.378	0.512	2.750	1.969	1.260	
1940 33516105	CAT50 -SRS0500A -105	0.500	4.134	2.756	1.378	0.591	2.750	2.756	1.457	3.1
1940 33516135	-135	0.500	5.315	3.937	1.378	0.591	2.750	2.756	1.457	3.1
1940 33516165	-165	0.500	6.496	5.118	1.378	0.591	2.750	2.756	1.457	3.3
1940 33516195	-195	0.500	7.677	6.299	1.378	0.591	2.750	2.756	1.457	3.4
1940 33520105	CAT50 -SRS0625A -105	0.625	4.134	2.756	1.378	0.787	2.750	3.150	1.575	
1940 33520135	-135	0.625	5.315	3.937	1.378	0.787	2.750	3.150	1.575	3.2
1940 33520165	-165	0.625	6.496	5.118	1.378	0.787	2.750	3.150	1.575	
1940 33520195	-195	0.625	7.677	6.299	1.378	0.787	2.750	3.150	1.575	
1940 33524105	CAT50 -SRS0750A -105	0.750	4.134	2.756	1.378	1.024	2.750	3.937	1.654	
1940 33524135	-135	0.750	5.315	3.937	1.378	1.024	2.750	3.937	1.654	
1940 33524165	-165	0.750	6.496	5.118	1.378	1.024	2.750	3.937	1.654	3.5
1940 33524195	-195	0.750	7.677	6.299	1.378	1.024	2.750	3.937	1.654	

1. Always use carbide shank tools with h6 tolerance.

2. Use 2pcs. of M4 × 5(S) hex. screw (included) to close air holes on the chuck when internal coolant is used.

Ordering Example

CAT40 - SRS 0250 A - 105

Shank size

I.D. (d)

Projection length (L)

Metric Sizes

Unit : Inch

Code	Model	d (mm)	L	L1	L2	D	D1	I1	I	kg
1940 31406105	CAT40 -SRS6A -105	6	4.134	2.756	1.378	0.354	1.750	1.417	1.024	1.0
1940 31406135	-135	6	5.315	3.937	1.378	0.354	1.750	1.417	1.024	
1940 31408105	CAT40 -SRS8A -105	8	4.134	2.756	1.378	0.433	1.750	1.969	1.024	1.1
1940 31408135	-135	8	5.315	3.937	1.378	0.433	1.750	1.969	1.024	
1940 31410105	CAT40 -SRS10A -105	10	4.134	2.756	1.378	0.512	1.750	1.969	1.260	1.1
1940 31410135	-135	10	5.315	3.937	1.378	0.512	1.750	1.969	1.260	
1940 31410165	-165	10	6.496	5.118	1.378	0.512	1.750	1.969	1.260	
1940 31412105	CAT40 -SRS12A -105	12	4.134	2.756	1.378	0.591	1.750	2.756	1.457	1.1
1940 31412135	-135	12	5.315	3.937	1.378	0.591	1.750	2.756	1.457	
1940 31412165	-165	12	6.496	5.118	1.378	0.591	1.750	2.756	1.457	1.3
1940 31416105	CAT40 -SRS16A -105	16	4.134	2.756	1.378	0.787	1.750	3.150	1.575	
1940 31416135	-135	16	5.315	3.937	1.378	0.787	1.750	3.150	1.575	
1940 31416165	-165	16	6.496	5.118	1.378	0.787	1.750	3.150	1.575	
1940 31420105	CAT40 -SRS20A -105	20	4.134	2.756	1.378	1.024	1.750	3.937	1.654	
1940 31420135	-135	20	5.315	3.937	1.378	1.024	1.750	3.937	1.654	
1940 31420165	-165	20	6.496	5.118	1.378	1.024	1.750	3.937	1.654	
1940 31506105	CAT50 -SRS6A -105	6	4.134	2.756	1.378	0.354	2.750	1.417	1.024	
1940 31506135	-135	6	5.315	3.937	1.378	0.354	2.750	1.417	1.024	
1940 31506165	-165	6	6.496	5.118	1.378	0.354	2.750	1.417	1.024	
1940 31508105	CAT50 -SRS8A -105	8	4.134	2.756	1.378	0.433	2.750	1.969	1.024	
1940 31508135	-135	8	5.315	3.937	1.378	0.433	2.750	1.969	1.024	
1940 31508165	-165	8	6.496	5.118	1.378	0.433	2.750	1.969	1.024	
1940 31510105	CAT50 -SRS10A -105	10	4.134	2.756	1.378	0.512	2.750	1.969	1.260	3.0
1940 31510135	-135	10	5.315	3.937	1.378	0.512	2.750	1.969	1.260	
1940 31510165	-165	10	6.496	5.118	1.378	0.512	2.750	1.969	1.260	
1940 31510195	-195	10	7.677	6.299	1.378	0.512	2.750	1.969	1.260	3.3
1940 31512105	CAT50 -SRS12A -105	12	4.134	2.756	1.378	0.591	2.750	2.756	1.457	
1940 31512135	-135	12	5.315	3.937	1.378	0.591	2.750	2.756	1.457	3.1
1940 31512165	-165	12	6.496	5.118	1.378	0.591	2.750	2.756	1.457	
1940 31512195	-195	12	7.677	6.299	1.378	0.591	2.750	2.756	1.457	3.4
1940 31516105	CAT50 -SRS16A -105	16	4.134	2.756	1.378	0.787	2.750	3.150	1.575	
1940 31516135	-135	16	5.315	3.937	1.378	0.787	2.750	3.150	1.575	
1940 31516165	-165	16	6.496	5.118	1.378	0.787	2.750	3.150	1.575	3.4
1940 31516195	-195	16	7.677	6.299	1.378	0.787	2.750	3.150	1.575	
1940 31520105	CAT50 -SRS20A -105	20	4.134	2.756	1.378	1.024	2.750	3.937	1.654	
1940 31520135	-135	20	5.315	3.937	1.378	1.024	2.750	3.937	1.654	
1940 31520165	-165	20	6.496	5.118	1.378	1.024	2.750	3.937	1.654	
1940 31520195	-195	20	7.677	6.299	1.378	1.024	2.750	3.937	1.654	

1. Always use carbide shank tools with h6 tolerance.

2. Use 2pcs. of M4 x 5(S) hex. screw (included) to close air holes on the chuck when internal coolant is used.

Heating device chart

heating device	chuck	
	SRS0250A, SRS0312A SRS6A, SRS8A	SRS0375A~SRS0750A SRS10A~SRS20A
ISG3400	Yes	Yes
SRK-HA1, HB2	No	Yes

Ordering Example

CAT40 - SRS 12 A - 105

Shank size

I.D. (d)

Projection
length (L)

BT

CAT

AHO

HSK-A/E/F/C

HSK-T

UTS

Specialized
MachineRelated
EquipmentBush &
Chamfering
Drill

Milling Chuck

Collet Holder

"R" Zero Holder

Hydraulic Chuck

Shank Fit

Tapping Chuck

Arbors

Function Holder

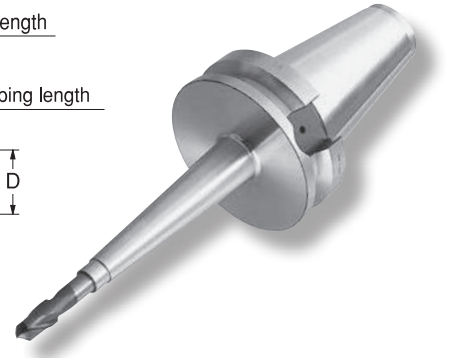
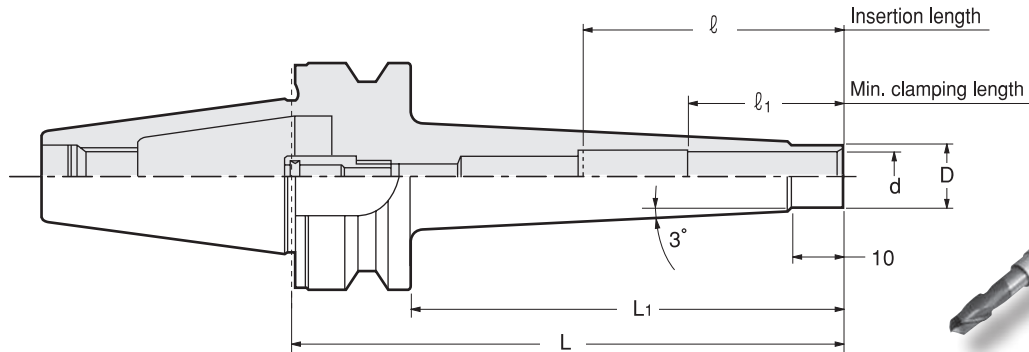
Retention Stud

Tool Shank
Dimensions

Shrink Fit (Slim Type)

※ AHO Retention Stud is required.

- Shrinkage method clamps a cutting tool firmly by heating and cooling the chuck. High precision and strong Clamping force. (Slim Type)



- Our two-face contact NBT spindle is incompatible with BT two-face contact spindle (for BBT-AHO). Please refer to P. 41.
- When AHO is used with center through coolant feeding, a designated retention stud (with coolant pipe) for AHO must be used.

Metric Sizes

Unit : Metric

Code	Model	d	L	L1	D	l1	l
3820 ※ 1370000	NBT-AHO30 or BBT-AHO30 -SRS6A -105	6	105	83	9	26	26 ~ 36
3820 ※ 1380000	-135	6	135	113	9	26	26 ~ 36
3820 ※ 1390000	NBT-AHO30 or BBT-AHO30 -SRS8A -105	8	105	83	11	26	26 ~ 50
3820 ※ 1400000	-135	8	135	113	11	26	26 ~ 50
3820 ※ 1410000	NBT-AHO30 or BBT-AHO30 -SRS10A -105	10	105	83	13	32	32 ~ 50
3820 ※ 1420000	-135	10	135	113	13	32	32 ~ 50
3820 ※ 1430000	NBT-AHO30 or BBT-AHO30 -SRS12A -105	12	105	83	15	37	37 ~ 70
3820 ※ 1440000	-135	12	135	113	15	37	37 ~ 70
3820 ※ 1450000	NBT-AHO30 or BBT-AHO30 -SRS16A -105	16	105	83	20	40	40 ~ 80
3820 ※ 1460000	-135	16	135	113	20	40	40 ~ 80
3820 ※ 1010000	NBT-AHO40 or BBT-AHO40 -SRS6A -105	6	105	78	9	26	26 ~ 36
3820 ※ 1020000	-135	6	135	108	9	26	26 ~ 36
3820 ※ 1030000	NBT-AHO40 or BBT-AHO40 -SRS8A -105	8	105	78	11	26	26 ~ 50
3820 ※ 1040000	-135	8	135	108	11	26	26 ~ 50
3820 ※ 1050000	NBT-AHO40 or BBT-AHO40 -SRS10A -105	10	105	78	13	32	32 ~ 50
3820 ※ 1060000	-135	10	135	108	13	32	32 ~ 50
3820 ※ 1070000	-165	10	165	138	13	32	32 ~ 50
3820 ※ 1080000	NBT-AHO40 or BBT-AHO40 -SRS12A -105	12	105	78	15	37	37 ~ 70
3820 ※ 1090000	-135	12	135	108	15	37	37 ~ 70
3820 ※ 1100000	-165	12	165	138	15	37	37 ~ 70
3820 ※ 1110000	NBT-AHO40 or BBT-AHO40 -SRS16A -105	16	105	78	20	40	40 ~ 80
3820 ※ 1120000	-135	16	135	108	20	40	40 ~ 80
3820 ※ 1130000	-165	16	165	138	20	40	40 ~ 80
3820 ※ 1140000	NBT-AHO40 or BBT-AHO40 -SRS20A -105	20	105	78	26	42	42 ~ 85
3820 ※ 1150000	-135	20	135	108	26	42	42 ~ 100
3820 ※ 1160000	-165	20	165	138	26	42	42 ~ 100
3820 ※ 1170000	NBT-AHO50 or BBT-AHO50 -SRS6A -105	6	105	67	9	26	26 ~ 36
3820 ※ 1180000	-135	6	135	97	9	26	26 ~ 36
3820 ※ 1190000	NBT-AHO50 or BBT-AHO50 -SRS8A -105	8	105	67	11	26	26 ~ 50
3820 ※ 1200000	-135	8	135	97	11	26	26 ~ 50
3820 ※ 1210000	NBT-AHO50 or BBT-AHO50 -SRS10A -105	10	105	67	13	32	32 ~ 50
3820 ※ 1220000	-135	10	135	97	13	32	32 ~ 50
3820 ※ 1230000	-165	10	165	127	13	32	32 ~ 50
3820 ※ 1240000	-195	10	195	157	13	32	32 ~ 50
3820 ※ 1250000	NBT-AHO50 or BBT-AHO50 -SRS12A -105	12	105	67	15	37	37 ~ 70
3820 ※ 1260000	-135	12	135	97	15	37	37 ~ 70
3820 ※ 1270000	-165	12	165	127	15	37	37 ~ 70
3820 ※ 1280000	-195	12	195	157	15	37	37 ~ 70

Metric Sizes

Unit : Metric

Code	Model	d	L	L1	D	ℓ1	ℓ
3820 ※ 1290000	NBT-AHO50 or BBT-AHO50 -SRS16A -105	16	105	67	20	40	40 ~ 80
3820 ※ 1300000	-135	16	135	97	20	40	40 ~ 80
3820 ※ 1310000	-165	16	165	127	20	40	40 ~ 80
3820 ※ 1320000	-195	16	195	157	20	40	40 ~ 80
3820 ※ 1330000	NBT-AHO50 or BBT-AHO50 -SRS20A -105	20	105	67	26	42	42 ~ 85
3820 ※ 1340000	-135	20	135	97	26	42	42 ~ 100
3820 ※ 1350000	-165	20	165	127	26	42	42 ~ 100
3820 ※ 1360000	-195	20	195	157	26	42	42 ~ 100

Please replace ※ in the code with 0 for NBT-AHO and 5 for BBT-AHO.

Always use carbide shank tools with h6 tolerance.

Heating device chart

heating device	chuck	
	SRS6A, SRS8A	SRS10A~SRS20A
ISG3400	Yes	Yes
SRK-HA1, HB2	No	Yes

Ordering Example

Corresponding to our two-face contact BT spindle

NBT-AHO40 - SRS 12 A - 105
 Shank size I.D. (d) Projection length (L)

Ordering Example

Corresponding to BT two-face contact spindle

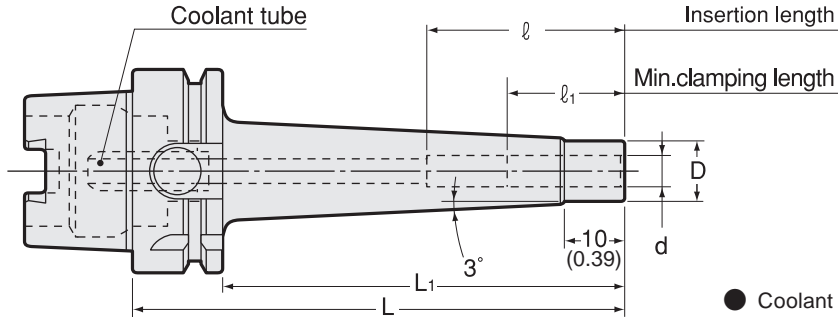
BBT-AHO40 - SRS 12 A - 105
 Shank size I.D. (d) Projection length (L)

- CVT-AHO type is available.(Special order)

SRS

Shrink Fit (Slim Type)

- Shrinkage method sets a cutting tool firmly by heating and cooling the chuck. High precision and strong chucking. (Slim Type)



● Coolant tube is included.

Inch Sizes Unit : Inch

Code	Model	d (mm)	L	L1	D	l1	l
5640 33308090	HSK40A -SRS0250A -90	0.250	3.543	2.756	0.354	1.024	1.417
5640 33308120	-120	0.250	4.724	3.937	0.354	1.024	1.417
5640 33310090	HSK40A -SRS0312A -90	0.312	3.543	2.756	0.433	1.024	1.969
5640 33310120	-120	0.312	4.724	3.937	0.433	1.024	1.969
5640 33312090	HSK40A -SRS0375A -90	0.375	3.543	2.756	0.512	1.260	1.969
5640 33312120	-120	0.375	4.724	3.937	0.512	1.260	1.969
5640 33316090	HSK40A -SRS0500A -90	0.500	3.543	2.756	0.591	1.457	2.756
5640 33316120	-120	0.500	4.724	3.937	0.591	1.457	2.756
5640 33320090	HSK40A -SRS0625A -90	0.625	3.543	2.756	0.787	1.575	2.756
5640 33320120	-120	0.625	4.724	3.937	0.787	1.575	3.150
5640 33508105	HSK63A -SRS0250A -105	0.250	4.134	3.110	0.354	1.024	1.417
5640 33508135	-135	0.250	5.315	4.291	0.354	1.024	1.417
5640 33508165	-165	0.250	6.496	5.472	0.354	1.024	1.417
5640 33510105	HSK63A -SRS0312A -105	0.312	4.134	3.110	0.433	1.024	1.969
5640 33510135	-135	0.312	5.315	4.291	0.433	1.024	1.969
5640 33510165	-165	0.312	6.496	5.472	0.433	1.024	1.969
5640 33512105	HSK63A -SRS0375A -105	0.375	4.134	3.110	0.512	1.260	1.969
5640 33512135	-135	0.375	5.315	4.291	0.512	1.260	1.969
5640 33512165	-165	0.375	6.496	5.472	0.512	1.260	1.969
5640 33516105	HSK63A -SRS0500A -105	0.500	4.134	3.110	0.591	1.457	2.756
5640 33516135	-135	0.500	5.315	4.291	0.591	1.457	2.756
5640 33516165	-165	0.500	6.496	5.472	0.591	1.457	2.756
5640 33520105	HSK63A -SRS0625A -105	0.625	4.134	3.110	0.787	1.575	2.953
5640 33520135	-135	0.625	5.315	4.291	0.787	1.575	3.150
5640 33520165	-165	0.625	6.496	5.472	0.787	1.575	3.150
5640 33524105	HSK63A -SRS0750A -105	0.750	4.134	3.110	1.024	1.654	2.953
5640 33524135	-135	0.750	5.315	4.291	1.024	1.654	3.937
5640 33524165	-165	0.750	6.496	5.472	1.024	1.654	3.937
5640 33708105	HSK100A -SRS0250A -105	0.250	4.134	2.795	0.354	1.024	1.417
5640 33708135	-135	0.250	5.315	3.976	0.354	1.024	1.417
5640 33708165	-165	0.250	6.496	5.157	0.354	1.024	1.417
5640 33710105	HSK100A -SRS0312A -105	0.312	4.134	2.795	0.433	1.024	1.969
5640 33710135	-135	0.312	5.315	3.976	0.433	1.024	1.969
5640 33710165	-165	0.312	6.496	5.157	0.433	1.024	1.969
5640 33712105	HSK100A -SRS0375A -105	0.375	4.134	2.795	0.512	1.260	1.969
5640 33712135	-135	0.375	5.315	3.976	0.512	1.260	1.969
5640 33712165	-165	0.375	6.496	5.157	0.512	1.260	1.969
5640 33712195	-195	0.375	7.677	6.339	0.512	1.260	1.969
5640 33716105	HSK100A -SRS0500A -105	0.500	4.134	2.795	0.591	1.457	2.756
5640 33716135	-135	0.500	5.315	3.976	0.591	1.457	2.756
5640 33716165	-165	0.500	6.496	5.157	0.591	1.457	2.756
5640 33716195	-195	0.500	7.677	6.339	0.591	1.457	2.756
5640 33720105	HSK100A -SRS0625A -105	0.625	4.134	2.795	0.787	1.575	2.756
5640 33720135	-135	0.625	5.315	3.976	0.787	1.575	3.150
5640 33720165	-165	0.625	6.496	5.157	0.787	1.575	3.150
5640 33720195	-195	0.625	7.677	6.339	0.787	1.575	3.150
5640 33724105	HSK100A -SRS0750A -105	0.750	4.134	2.795	1.024	1.654	2.756
5640 33724135	-135	0.750	5.315	3.976	1.024	1.654	3.937
5640 33724165	-165	0.750	6.496	5.157	1.024	1.654	3.937
5640 33724195	-195	0.750	7.677	6.339	1.024	1.654	3.937



Metric Sizes

Unit : Metric

Code	Model	d	L	L1	D	ℓ1	ℓ	kg
5640 31306090	HSK40A -SRS6A -90	6	90	70	9	26	26 ~ 36	0.5
5640 31306120	-120	6	120	100	9	26	26 ~ 36	0.5
5640 31308090	HSK40A -SRS8A -90	8	90	70	11	26	26 ~ 50	0.5
5640 31308120	-120	8	120	100	11	26	26 ~ 50	0.5
5640 31310090	HSK40A -SRS10A -90	10	90	70	13	32	32 ~ 50	0.5
5640 31310120	-120	10	120	100	13	32	32 ~ 50	0.5
5640 31312090	HSK40A -SRS12A -90	12	90	70	15	37	37 ~ 70	0.5
5640 31312120	-120	12	120	100	15	37	37 ~ 70	0.6
5640 31316090	HSK40A -SRS16A -90	16	90	70	20	40	40 ~ 70	0.6
5640 31316120	-120	16	120	100	20	40	40 ~ 80	0.6
5640 31406090	HSK50A -SRS6A -90	6	90	64	9	26	26 ~ 36	0.6
5640 31406120	-120	6	120	94	9	26	26 ~ 36	0.6
5640 31408090	HSK50A -SRS8A -90	8	90	64	11	26	26 ~ 50	0.6
5640 31408120	-120	8	120	94	11	26	26 ~ 50	0.6
5640 31410090	HSK50A -SRS10A -90	10	90	64	13	32	32 ~ 50	0.7
5640 31410120	-120	10	120	94	13	32	32 ~ 50	0.7
5640 31412090	HSK50A -SRS12A -90	12	90	64	15	37	37 ~ 65	0.7
5640 31412120	-120	12	120	94	15	37	37 ~ 70	0.8
5640 31416105	HSK50A -SRS16A -105	16	105	79	20	40	40 ~ 80	0.8
5640 31416135	-135	16	135	109	20	40	40 ~ 80	0.9
5640 31420105	HSK50A -SRS20A -105	20	105	79	26	42	42 ~ 80	0.9
5640 31420135	-135	20	135	109	26	42	42 ~ 100	1.0
5640 31506105	HSK63A -SRS6A -105	6	105	79	9	26	26 ~ 36	0.7
5640 31506135	-135	6	135	109	9	26	26 ~ 36	0.7
5640 31506165	-165	6	165	139	9	26	26 ~ 36	0.7
5640 31508105	HSK63A -SRS8A -105	8	105	79	11	26	26 ~ 50	0.8
5640 31508135	-135	8	135	109	11	26	26 ~ 50	0.8
5640 31508165	-165	8	165	139	11	26	26 ~ 50	0.8
5640 31510105	HSK63A -SRS10A -105	10	105	79	13	32	32 ~ 50	0.9
5640 31510135	-135	10	135	109	13	32	32 ~ 50	1.0
5640 31510165	-165	10	165	139	13	32	32 ~ 50	1.1
5640 31512105	HSK63A -SRS12A -105	12	105	79	15	37	37 ~ 70	1.0
5640 31512135	-135	12	135	109	15	37	37 ~ 70	1.0
5640 31512165	-165	12	165	139	15	37	37 ~ 70	1.1
5640 31516105	HSK63A -SRS16A -105	16	105	79	20	40	40 ~ 75	1.2
5640 31516135	-135	16	135	109	20	40	40 ~ 80	1.3
5640 31516165	-165	16	165	139	20	40	40 ~ 80	1.5
5640 31520105	HSK63A -SRS20A -105	20	105	79	26	42	42 ~ 75	1.1
5640 31520135	-135	20	135	109	26	42	42 ~ 100	1.2
5640 31520165	-165	20	165	139	26	42	42 ~ 100	1.3
5640 31706105	HSK100A -SRS6A -105	6	105	71	9	26	26 ~ 36	2.2
5640 31706135	-135	6	135	101	9	26	26 ~ 36	2.2
5640 31706165	-165	6	165	131	9	26	26 ~ 36	2.2
5640 31708105	HSK100A -SRS8A -105	8	105	71	11	26	26 ~ 50	2.3
5640 31708135	-135	8	135	101	11	26	26 ~ 50	2.3
5640 31708165	-165	8	165	131	11	26	26 ~ 50	2.3
5640 31710105	HSK100A -SRS10A -105	10	105	71	13	32	32 ~ 50	2.4
5640 31710135	-135	10	135	101	13	32	32 ~ 50	2.4
5640 31710165	-165	10	165	131	13	32	32 ~ 50	2.6
5640 31710195	-195	10	195	161	13	32	32 ~ 50	2.6
5640 31712105	HSK100A -SRS12A -105	12	105	71	15	37	37 ~ 70	2.4
5640 31712135	-135	12	135	101	15	37	37 ~ 70	2.5
5640 31712165	-165	12	165	131	15	37	37 ~ 70	2.6
5640 31712195	-195	12	195	161	15	37	37 ~ 70	2.7
5640 31716105	HSK100A -SRS16A -105	16	105	71	20	40	40 ~ 70	2.5
5640 31716135	-135	16	135	101	20	40	40 ~ 80	2.6
5640 31716165	-165	16	165	131	20	40	40 ~ 80	2.8
5640 31716195	-195	16	195	161	20	40	40 ~ 80	2.9
5640 31720105	HSK100A -SRS20A -105	20	105	71	26	42	42 ~ 70	2.6
5640 31720135	-135	20	135	101	26	42	42 ~ 100	2.7
5640 31720165	-165	20	165	131	26	42	42 ~ 100	2.8
5640 31720195	-195	20	195	161	26	42	42 ~ 100	2.9

Always use carbide shank tools with h6 tolerance.

Heating device chart		
heating device	chuck	
	SRS0250A, SRS0312A SRS6A, SRS8A	SRS0375A~SRS0750A SRS10A~SRS20A
ISG3400	Yes	Yes
SRK-HA1, HB2	No	Yes

Ordering Example

HSK40A - SRS 12 A - 105

Shank size

I.D. (d)

Projection length (L)

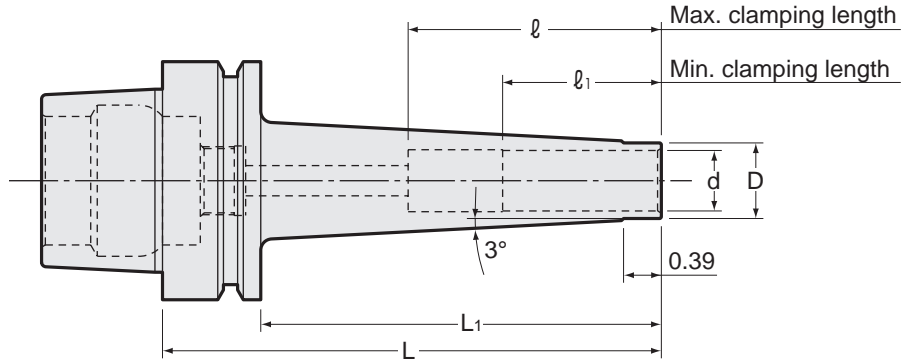


- BT
- CAT
- AHO
- HSK-A/E/F/C
- HSK-T
- UTS
- Specialized Machine
- Related Equipment
- Bush & Chamfering Drill
- Milling Chuck
- Collet Holder
- "R" Zero Holder
- Hydraulic Chuck
- Shank Fit
- Tapping Chuck
- Arbors
- Function Holder
- HSK-E
- HSK-F
- HSK-C
- Tool Shank Dimensions

SRS

Shrink Fit (Slim Type)

- Shrinkage method sets a cutting tool firmly by heating and cooling the chuck. High precision and strong chucking. (Slim Type)



Inch Sizes							Unit : Inch	
Code	Model	d	L	L1	D	l1	l	
5644 33308090	HSK40E -SRS0250A -90	0.250	3.543	2.756	0.354	1.024	1.417	
5644 33308120	-120	0.250	4.724	3.937	0.354	1.024	1.417	
5644 33310090	HSK40E -SRS0312A -90	0.312	3.543	2.756	0.433	1.024	1.969	
5644 33310120	-120	0.312	4.724	3.937	0.433	1.024	1.969	
5644 33312090	HSK40E -SRS0375A -90	0.375	3.543	2.756	0.512	1.260	1.969	
5644 33312120	-120	0.375	4.724	3.937	0.512	1.260	1.969	
5644 33316090	HSK40E -SRS0500A -90	0.500	3.543	2.756	0.591	1.457	2.756	
5644 33316120	-120	0.500	4.724	3.937	0.591	1.457	2.756	
5644 33320090	HSK40E -SRS0625A -90	0.625	3.543	2.756	0.787	1.575	2.756	
5644 33320120	-120	0.625	4.724	3.937	0.787	1.575	3.150	

Always use carbide shank tools with h6 tolerance.

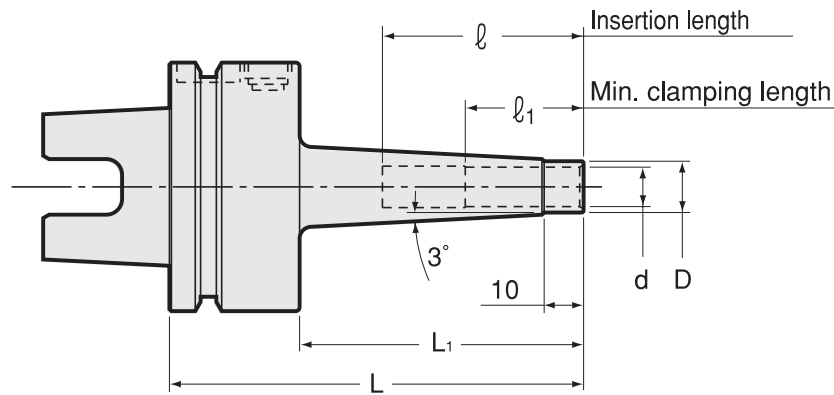
Heating device chart		
heating device	chuck	
	SRS0250A, SRS0312A SRS6A, SRS8A	SRS0375A~SRS0750A SRS10A~SRS20A
ISG3400	Yes	Yes
SRK-HA1, HB2	No	Yes

Ordering Example

HSK40E - SRS 0250 A - 120
Shank size I.D. (d) Projection length (L)

Shrink Fit (Slim Type)

- Shrinkage method sets a cutting tool firmly by heating and cooling the chuck. High precision and strong chucking. (Slim Type)



Metric Sizes

Unit : Metric

Code	Model	d	L	L1	D	l1	l
1300 31106090	UTS5040 -SRS6A -90-H	6	90	60	9	26	26 ~ 36
1300 31106120	-120-H	6	120	90	9	26	26 ~ 36
1300 31108090	UTS5040 -SRS8A -90-H	8	90	60	11	26	26 ~ 50
1300 31108120	-120-H	8	120	90	11	26	26 ~ 50
1300 31110105	UTS5040 -SRS10A -105-H	10	105	75	13	32	32 ~ 50
1300 31110135	-135-H	10	135	105	13	32	32 ~ 50
1300 31112105	UTS5040 -SRS12A -105-H	12	105	75	15	37	37 ~ 65
1300 31112135	-135-H	12	135	105	15	37	37 ~ 70
1300 31116105	UTS5040 -SRS16A -105-H	16	105	75	20	40	40 ~ 80
1300 31116135	-135-H	16	135	105	20	40	40 ~ 80
1300 31120105	UTS5040 -SRS20A -105-H	20	105	75	26	42	42 ~ 80
1300 31120135	-135-H	20	135	105	26	42	42 ~ 100
1300 3 ※ 206105	UTS6350 -SRS6A -105	6	105	72	9	26	26 ~ 36
1300 3 ※ 206135	-135	6	135	102	9	26	26 ~ 36
1300 3 ※ 206165	-165	6	165	132	9	26	26 ~ 36
1300 3 ※ 208105	UTS6350 -SRS8A -105	8	105	72	11	26	26 ~ 50
1300 3 ※ 208135	-135	8	135	102	11	26	26 ~ 50
1300 3 ※ 208165	-165	8	165	132	11	26	26 ~ 50
1300 3 ※ 210105	UTS6350 -SRS10A -105	10	105	72	13	32	32 ~ 50
1300 3 ※ 210135	-135	10	135	102	13	32	32 ~ 50
1300 3 ※ 210165	-165	10	165	132	13	32	32 ~ 50
1300 3 ※ 212105	UTS6350 -SRS12A -105	12	105	72	15	37	32 ~ 70
1300 3 ※ 212135	-135	12	135	102	15	37	32 ~ 70
1300 3 ※ 212165	-165	12	165	132	15	37	32 ~ 70
1300 3 ※ 216105	UTS6350 -SRS16A -105	16	105	72	20	40	40 ~ 75
1300 3 ※ 216135	-135	16	135	102	20	40	40 ~ 80
1300 3 ※ 216165	-165	16	165	132	20	40	40 ~ 80
1300 3 ※ 220105	UTS6350 -SRS20A -105	20	105	72	26	42	42 ~ 75
1300 3 ※ 220135	-135	20	135	102	26	42	42 ~ 100
1300 3 ※ 220165	-165	20	165	132	26	42	42 ~ 100
1300 3 ※ 306105	UTS10080 -SRS6A -105	6	105	71	9	26	26 ~ 36
1300 3 ※ 306135	-135	6	135	101	9	26	26 ~ 36
1300 3 ※ 306165	-165	6	165	131	9	26	26 ~ 36
1300 3 ※ 308105	UTS10080 -SRS8A -105	8	105	71	11	26	26 ~ 50
1300 3 ※ 308135	-135	8	135	101	11	26	26 ~ 50
1300 3 ※ 308165	-165	8	165	131	11	26	26 ~ 50
1300 3 ※ 310105	UTS10080 -SRS10A -105	10	105	71	13	32	32 ~ 50
1300 3 ※ 310135	-135	10	135	101	13	32	32 ~ 50
1300 3 ※ 310165	-165	10	165	131	13	32	32 ~ 50
1300 3 ※ 310195	-195	10	195	161	13	32	32 ~ 50

Metric Sizes Unit : Metric

Code	Model	d	L	L1	D	ℓ1	ℓ
1300 3 ※ 312105	UTS10080 -SRS12A -105	12	105	71	15	37	37 ~ 70
1300 3 ※ 312135		12	135	101	15	37	37 ~ 70
1300 3 ※ 312165		12	165	131	15	37	37 ~ 70
1300 3 ※ 312195		12	195	161	15	37	37 ~ 70
1300 3 ※ 316105	UTS10080 -SRS16A -105	16	105	71	20	40	40 ~ 70
1300 3 ※ 316135		16	135	101	20	40	42 ~ 80
1300 3 ※ 316165		16	165	131	20	40	42 ~ 80
1300 3 ※ 316195		16	195	161	20	40	42 ~ 80
1300 3 ※ 320105	UTS10080 -SRS20A -105	20	105	71	26	42	42 ~ 70
1300 3 ※ 320135		20	135	101	26	42	42 ~ 100
1300 3 ※ 320165		20	165	131	26	42	42 ~ 100
1300 3 ※ 320195		20	195	161	26	42	42 ~ 100

When placing an order, please specify high or low pressure. For high pressure type, please add (-H) on end of the description.

1. Always use carbide shank tools with h6 tolerance.
2. UTS5040 is available in high pressure only.

Heating device chart		
heating device	chuck	
	SRS0250A, SRS0312A SRS6A, SRS8A	SRS0375A~SRS0750A SRS10A~SRS20A
ISG3400	Yes	Yes
SRK-HA1, HB2	No	Yes

Ordering Example
Low pressure type
 0 ~ 1.0MPa (UTS10080 : 0 ~ 2.0MPa)
UTS6350 - SRS 10 A - 105
 Shank size I.D. (d) Projection length (L)

Ordering Example
High pressure type
 1.1 ~ 7.0MPa (UTS10080 : 2.1 ~ 7.0MPa)
UTS6350 - SRS 10 A - 105 - H
 Shank size I.D. (d) Projection length (L) High pressure type